

Title.	Distance	Place	OS Map
Endcliffe Park - Porter Valley	1 - 3 Mile 1 - 5 Km	Endcliffe Park Sheffield	OS 111 Sheffield & Doncaster

Endcliffe Park in the Porter Valley is a popular family visitor destination and is a large park with a riverside walk along Porter Brook and park features include Toll Gates, Jubilee Monument, Jubilee Obelisk and a dedicated statue to Queen Victoria, and there is also a memorial stone at the crash site of a flying fortress plane..

A new playground was added in 2008 with many attractions for children, and the park often hosts many events in the summer.

The walk from the park in the Porter Valley also passes Holme, Nether Spurr, Ibbotson and Shepherds Mill Wheel Dams - then Wiremill Dam and Forge Dam.

- **Facilities** – Endcliffe Park Café – Children’s Playground – Monuments and Statues – Wheel Mills - Riverside Walk.

The main entrances to Endcliffe Park are off Hunters Bar and Rustlings Road where some public car parking is available within the park.

- **Café** – The Family Friendly Cafe in the beautiful Endcliffe Park, is open every day of the week for light snacks to a full cooked English breakfast, or simply a steaming pot of tea. Also nearby are various Inns and cafes.

- **Toilets** - Toilets are situated near the café.

- **Path** – From Endcliffe Park the path follows the Porter Brook, which offers a tranquil walk suitable for wheelchair users. The paths are of a tarmac surface, and some of fine rolled-in crushed stone with a few slopes requiring a pusher.

The path continues following the Porter Brook through Bingham Park, Trippet Woods, Whiteley Woods and past various Wheel Dams to Forge Dam with its duck pond.

See gallery for Information only – more photos to follow later

- **Information** – There is a leaflet on this website with more information and photos on the websites below, which also describe the history of Porter Valley.

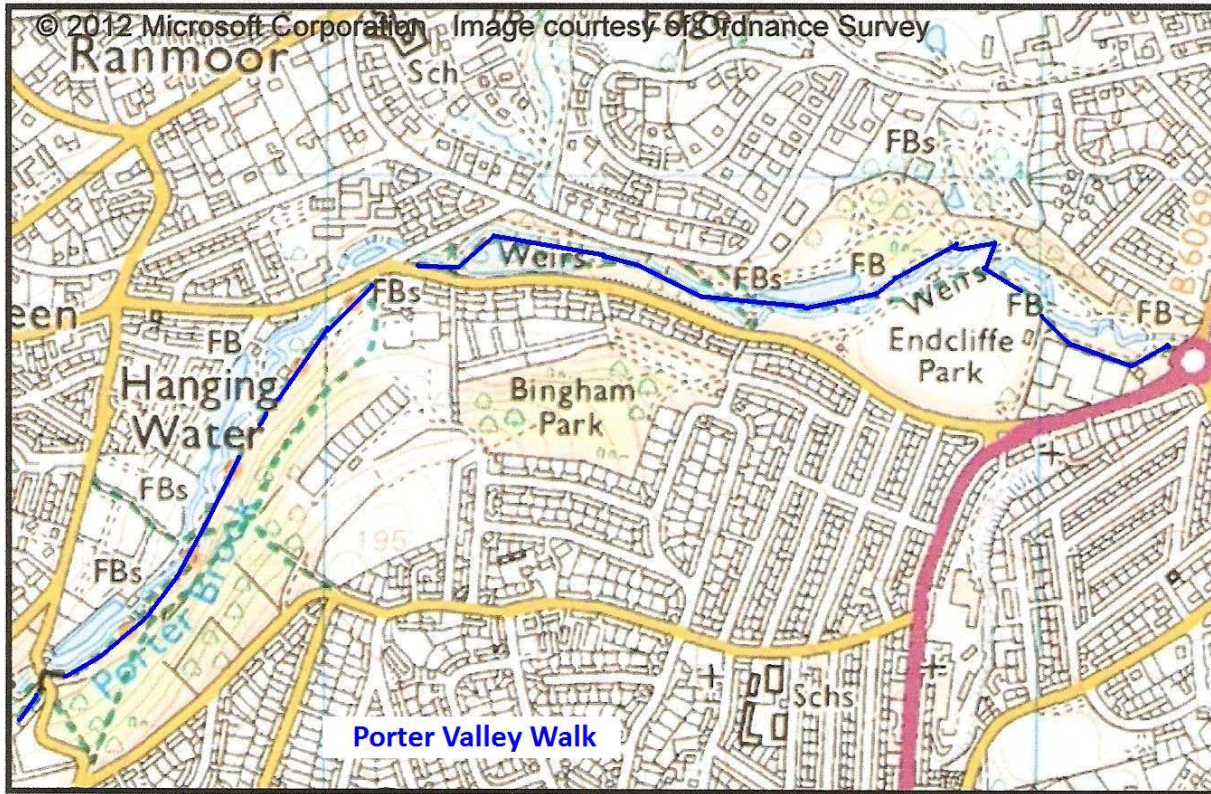
Tel. No. – Endcliffe Park café - 0808 120 6858

- **Website** – Porter Valley and Endcliffe Park
Endcliffe Park - www.sheffield.gov.uk/.../endcliffe-park
Endcliffe Park Café - sheffieldparkcafe.com
Friends of Porter Valley - www.sheffieldportervalley.org.uk
Forge Dam photos - www.panoramio.com/photo/15475833
Porter Valley - en.wikipedia.org/wiki/Porter_Brook

- **Directions** – Ecclesall Park is situated 2 miles south west of the centre of Sheffield on Ecclesall Road A625 – the park entrance is at the Hunters Bar / Brocco Bank Road round-a-bout – see location.

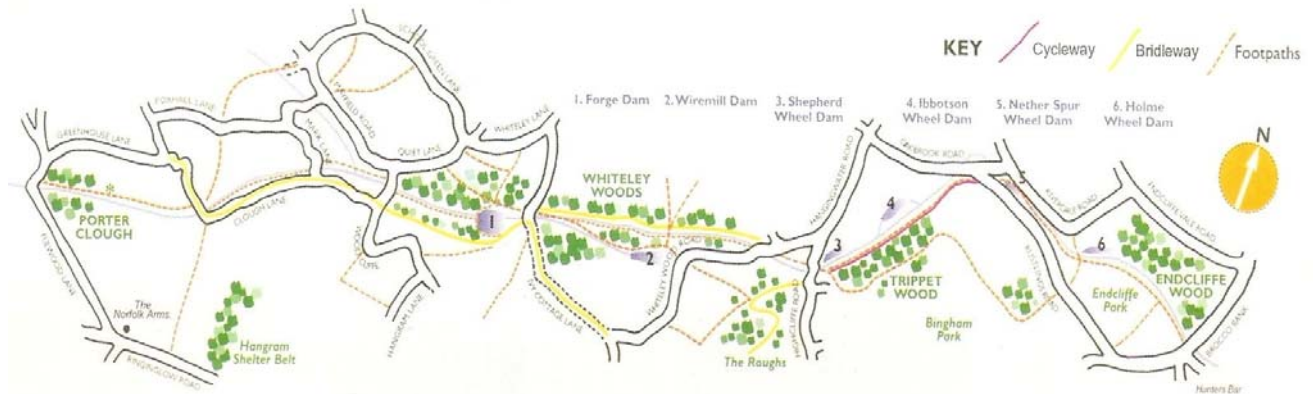
- **Places to visit nearby** – Ecclesall Woods - Botanical Gardens – Millhouses Park - Abbeydale Industrial Hamlet – Weston Park – Sheffield – The Peak District.

Porter Valley Walk

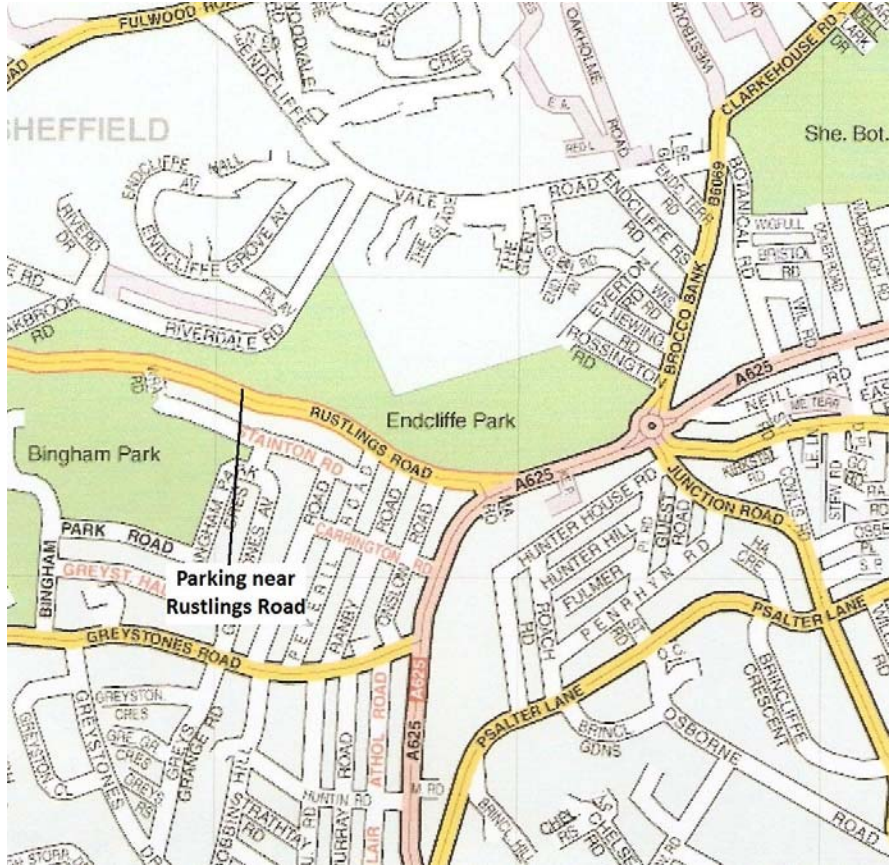


Dore, Sheffield. Sheffield53.3253707885742 -1.53402996063232

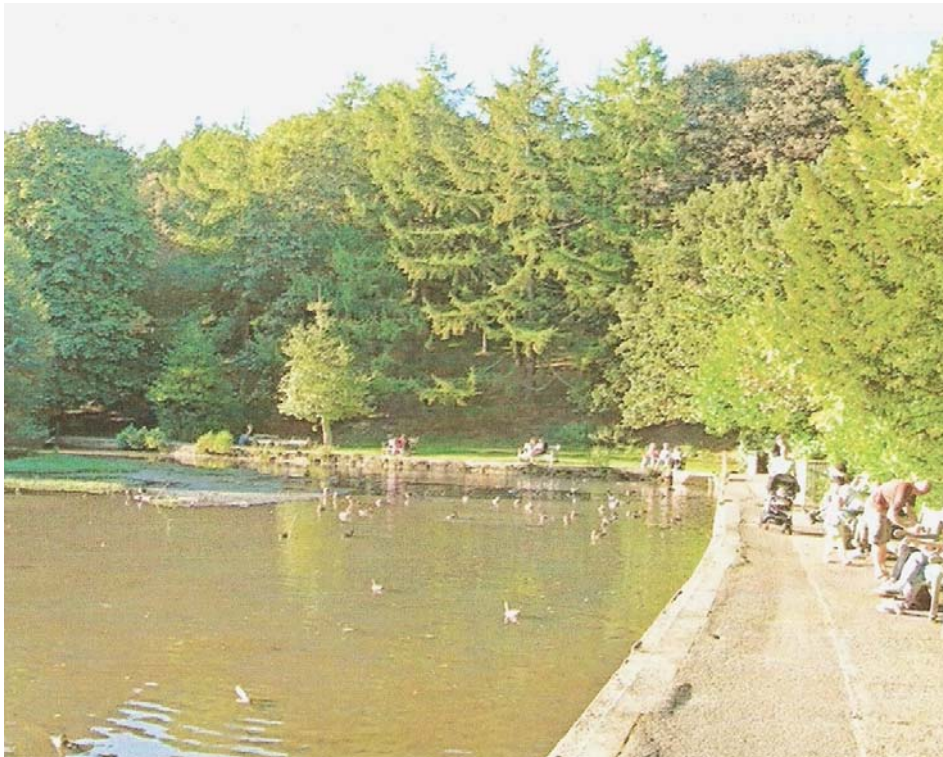
Walk Route



Endcliffe Park Location



Duck Pond



Obelisk



Sharrow Mill



Porter Valley Path

